



PERFORMANCE

02/14/2023



USA PRICE LIST

MOVING INTO THE FUTURE



February 14, 2023

**12" - 14" FLYWHEEL PROSCIUTTO SLICERS - PEDESTAL INCLUDED**

11307100N	ANNIVERSARIO 300 NSF - 12" set	\$	9,490.00
11357100N	ANNIVERSARIO LX 350 NSF - 14" set	\$	9,750.00

**10", 12" ENTRY SLICERS**

14251628	SMART 250 - 10"	\$	1,305.00
14303328	MIRRA 300 C - 12"	\$	1,640.00

**10", 12" SLICERS**

15253328	MIRRA 250 PLUS - 10"	\$	1,440.00
15303528	MIRRA 300 PLUS - 12"	\$	1,970.00

**12", 14" HEAVY-DUTY SLICERS**

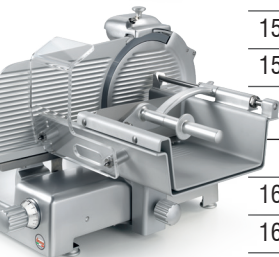
15304C0G08WNA	CANOVA 300 - 12"	\$	2,550.00
153040G08WNA	PALLADIO 300 - 12"	\$	3,270.00
15354C0G08WNA	PALLADIO 350 - 14"	\$	3,490.00

**13" GEAR DRIVE SLICER**

153341N08WNA	PALLADIO 330 ING - 13"	\$	4,125.00
--------------	------------------------	----	----------

**13", 14" HEAVY-DUTY DELI / SUPERMARKET SLICERS**

15334528SNA	PALLADIO 330 EVO TOP - 13", with Aluminum Knobs	\$	5,035.00
15359028SNA	RAFFAELLO 350 EVO TOP - 14" with Aluminum Knobs	\$	5,380.00
16354028SNA	GALILEO 350 EVO TOP - Full-size 14", with Aluminum Knobs	\$	6,010.00
19510453P	PALLADIO Fence, rectangular / round products	\$	140.00
19510453.14	GALILEO Fence, rectangular / round products	\$	160.00
19705020	Vegetable Chute	\$	670.00

**12", 13", 14" AUTOMATIC SLICERS**

15304C4G08NA	CANOVA 300 AUTOMECH - 12" Automatic	\$	5,105.00
153349GU8VNA	PALLADIO 330 EVO AUTOMECH VV - 13" Automatic - Variable Speed	\$	7,605.00
19705020	Vegetable Chute	\$	670.00

14" HORIZONTAL STRAIGHT-FEED SLICERS

15352508SNA	MANTEGNA 350 VCS TOP - 14", for Fresh Meat	\$	4,800.00
1535R2208SNA	MANTEGNA 350 BS TOP ROSSA - 14" Red Finish, for Cured Meats	\$	4,945.00

15" FULL-SIZE HORIZONTAL STRAIGHT-FEED SLICERS * available on request*****

16377508SNA	LEONARDO 370 EVO VCS TOP - Full-size 15", for Fresh Meat	\$	6,125.00
16377108SNA	LEONARDO 370 EVO BS2 TOP - Full-size 15", for Cured Meats	\$	6,115.00

February 14, 2023

**PASTA MAKERS**

40115068	CONCERTO 5	\$	5,295.00
LF02300057	Pasta Cutter, Concerto 5	\$	795.00



40117056	ORCHESTRA 10 2V ***available 3th quarter 2023***	\$	12,340.00
40117120	Pasta Cutter, Orchestra 10 2V	\$	1,140.00
58706407	Pasta tray 23 1/2 x 16 3/4 x 2 3/4 H(60x40x7)	\$	40.00
LF202510062	RACK - Pasta trays holder	\$	1,005.00
LF202510068	DRYER - pasta dryer for RACK	\$	500.00
LF0230062	FRIO 5 Head cooling system, CONCERTO 5	\$	320.00
LF0230022	FRIO 10 Head cooling system, ORCHESTRA 10	\$	415.00
LF0230065	FRIO R Water recirculation option for FRIO 5 and FRIO 10	\$	140.00

**PASTA EXTRUDER ATTACHMENT**

60303500	i2PASTA	\$	960.00
LF02300057	Pasta Cutter, i2PASTA	\$	795.00

CONCERTO 5 / i2PASTA - pasta dies 75MM

28180005	#5 CAPELLINI a.k.a. ANGEL HAIR 1.1MM	\$	245.00
28180009	#9 SPAGHETTI 1.9MM	\$	245.00
28180013	#13 BIGOLI 3MM	\$	245.00
28180021	#21 LINGUINE 3X1.6MM	\$	245.00
28180025	#25 SPAGHETTI ALLA CHITARRA 2MM	\$	245.00
28180032	#32 TAGLIOLINI 3.5MM	\$	245.00
28180034	#34 TAGLIATELLE 6MM	\$	245.00
28180036	#36 FETTUCCINE 10MM	\$	245.00
28180038	#38 PAPPARDELLE 15MM	\$	245.00
28180056	#56 MAFALDINE a.k.a. REGINETTE 16MM	\$	245.00
28180062	#62 BUCATINI 5MM	\$	245.00
28180069	#69 PACCHERI a.k.a. MANICOTTI 25MM	\$	245.00
28180077	#77 RIGATONI 8MM	\$	245.00
28180091	#91 GRAMIGNE 3MM	\$	245.00
28180191	#191 GNOCCHI SARDI 19MM	\$	245.00
28180200	#200 CAVATAPPI a.k.a. CELLENTANI 7.8MM	\$	245.00
28180220	#220 CASERECCE 8.8MM	\$	245.00
28180240	#240 FUSILLI 8.4MM [3P]	\$	245.00
28181000	#1000 LASAGNA DIE, ADJ.THICKNESS 1-4MM (1/32"-3/16")	\$	370.00
28180116	#116 PENNE 8.8MM W/DIAGONAL CUTTER KIT	\$	835.00
40115112			

Additional dies are available and can be selected from a standard range - please contact us

February 14, 2023



ORCHESTRA 10 2V - pasta dies 110MM

28183005	#5 CAPELLINI a.k.a. ANGEL HAIR 1.1MM	\$	525.00
28183009	#9 SPAGHETTI 1.9MM	\$	525.00
28183013	#13 BIGOLI 3MM	\$	525.00
28183021	#21 LINGUINE 3X1.6MM	\$	525.00
28183025	#25 SPAGHETTI ALLA CHITARRA 2MM	\$	525.00
28183032	#32 TAGLIOLINI 3.5MM	\$	525.00
28183034	#34 TAGLIATELLE 6MM	\$	525.00
28183036	#36 FETTUCCINE 10MM	\$	525.00
28183038	#38 PAPPARDELLE 15MM	\$	525.00
28183056	#56 MAFALDINE a.k.a. REGINETTE 16MM	\$	525.00
28183062	#62 BUCATINI 5MM	\$	525.00
28183069	#69 PACCHERI a.k.a. MANICOTTI 25MM	\$	525.00
28183077	#77 RIGATONI 8MM	\$	525.00
28183091	#91 GRAMIGNE 3MM	\$	525.00
28183191	#191 GNOCCHI SARDI 19MM	\$	525.00
28183200	#200 CAVATAPPI a.k.a. CELLENTANI 7.8MM	\$	525.00
28183220	#220 CASERECCE 8.8MM	\$	525.00
28183240	#240 FUSILLI 8.4MM [3P]	\$	525.00
28183000	#1000 LASAGNA DIE, ADJ. THICKNESS 1-4MM (1/32"-3/16")	\$	755.00
28183116 40117112	#116 PENNE 8.8MM W/DIAGONAL CUTTER KIT	\$	1,550.00

Additional dies are available and can be selected from a standard range - please contact us



SPIRAL MIXERS

40873056	HERCULES 30 - 220V	\$	3,590.00
40874056	HERCULES 40 - 220V	\$	4,185.00
40874556	HERCULES 40 TA - 220V	\$	4,890.00
40875756	HERCULES 50 TA - 220V	\$	6,760.00
40875866T	HERCULES 50 TA TIMER 2V - 2-speed, timer, 220V - 3Phase	\$	7,305.00
40875466T	HERCULES BIGA 50 - 220V - 3Phase	\$	7,005.00



DOUGH ROLLERS

40073218	P-ROLL 320/1 PLUS	\$	2,430.00
40074228	P-ROLL 420/2 PLUS	\$	4,065.00
40074258	P-ROLL 420/2 RP PLUS	\$	3,715.00
40051000	Foot Pedal P-ROLL	\$	130.00

February 14, 2023

**CONTINUOUS-FEED FOOD PROCESSOR / VEGETABLE CUTTER**

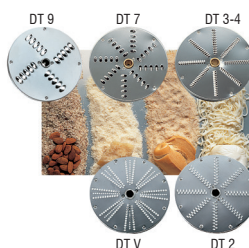
40752558W3	TM A3 - 3-pack plates: DF1 - 1/16 (1mm), DF4 - 5/32 (4mm) slicer, DT3 - 1/8 (3mm) shredder	\$	2,155.00
40752558W6	TM A6 - 6-pack plates: DF1 - 1/16 (1mm), DF4 - 5/32 (4mm) , DF5 - 3/16 (5mm), DF10 - 3/8 (10mm) DT3 - 1/8 (3mm) shredder, PS10 - 3/8 (10mm) dicer (use with DF10 slicer)	\$	2,465.00
40752558W	TM A - unit only, please select plates below	\$	1,880.00

**Slicer Plates**

40751DF01	DF1 - 1/16" (1mm)	\$	116.00
40751DF02	DF2 - 5/64" (2mm)	\$	112.00
40751DF03	DF3 - 1/8" (3mm)	\$	112.00
40751DF04	DF4 - 5/32" (4mm)	\$	104.00
40751DF05	DF5 - 3/16" (5mm)	\$	104.00
40751DF08	DF8 - 5/16" (8mm)	\$	92.00
40751DF10	DF10 - 3/8" (10mm)	\$	86.00
40751DF14	DF14 - 9/16" (14mm)	\$	92.00

**Julienne Plates**

40751DQ04	DQ4 - 5/32" (4mm)	\$	174.00
40751DQ06	DQ6 - 1/4" (6mm)	\$	168.00
40751DQ08	DQ8 - 5/16" (8mm)	\$	162.00
40751DQ10	DQ10 - 3/8" (10mm)	\$	156.00

**Shredder Plates**

40751DTV	DTV - 1/16" (1mm)	\$	86.00
40751DT02	DT2 - 5/64" (2mm)	\$	108.00
40751DT03	DT3 - 1/8" (3mm)	\$	104.00
40751DT04	DT4 - 5/32" (4mm)	\$	98.00
40751DT07	DT7 - 9/32" (7mm)	\$	92.00
40751DT09	DT9 - 11/32" (9mm)	\$	96.00

**Dicer Plates - use with corresponding Slicer Plates size**

40751PS08	PS8 - 5/16" (8mm) - use with DF8 - 5/16" (8mm) slicer plate	\$	240.00
40751PS10	PS10 - 3/8" (10mm) - use with DF10 - 3/8" (10mm) slicer plate	\$	210.00
40751PS14	PS14 - 9/16" (14mm) - use with DF14 - 9/16" (14mm) slicer plate	\$	192.00
40751PS20	PS20 13/16" (20mm) - use with DF14 - 9/16" (14mm) slicer plate	\$	144.00
40750040	Plate Rack, TM	\$	24.00
4075S1SC	Chute, TM	\$	95.00

February 14, 2023



IMMERSION BLENDERS

66010108	CICLONE 20 - choice of 10" or 14" Interchangeable Shaft	\$	695.00
66520108	CICLONE 28 - choice of 10" or 14" Interchangeable Shaft	\$	715.00
66530108K1.2	CICLONE 36 - choice of 10" or 14" Interchangeable Shaft	\$	735.00
66510508	CICLONE 20 VT - choice of 10" or 14" Interchangeable Shaft - Variable Speed	\$	715.00
66520508	CICLONE 28 VT - choice of 10" or 14" Interchangeable Shaft - Variable Speed	\$	735.00
66530508K1.2	CICLONE 36 VT - choice of 10" or 14" Interchangeable Shaft - Variable Speed	\$	755.00

Accessories, Ciclone

66002500	10" Interchangeable Shaft, Ciclone	\$	180.00
66003500	14" Interchangeable Shaft, Ciclone	\$	180.00
66009000	Whisk, Ciclone	\$	425.00

Accessories, Vortex

66430108	VORTEX 43 - choice of 14" or 18" Interchangeable Shaft	\$	995.00
66450108	VORTEX 55 - choice of 14" or 18" Interchangeable Shaft	\$	995.00
66470108K1.4	VORTEX 75 - choice of 14" or 18" Interchangeable Shaft	\$	1,080.00
66430508	VORTEX 43 VT - choice of 14" or 18" Interchangeable Shaft - Variable Speed	\$	995.00
66450508	VORTEX 55 VT - choice of 14" or 18" Interchangeable Shaft - Variable Speed	\$	1,025.00
66470508K1.4	VORTEX 75 VT - choice of 14" or 18" Interchangeable Shaft - Variable Speed	\$	1,110.00

Accessories, Vortex

66203500	14" Interchangeable Shaft, Vortex	\$	380.00
66204510	18" Interchangeable Shaft, Vortex	\$	380.00
66209000	Whisk, Vortex	\$	440.00
IB2280122	Wall support, Vortex	\$	75.00
66201000	Pan support, Vortex	\$	385.00

BOWL CUTTERS

40780428S	C-TRONIC 4 VT	\$	1,975.00
40780628S	C-TRONIC 6 VT	\$	2,055.00
40780958S	C-TRONIC 9 PLUS	\$	3,810.00

Pesto Hummus S-blade:

MSC04AMOP	C-TRONIC 4 VT	\$	208.00
MSC06AMOP	C-TRONIC 6 VT	\$	220.00
MSC09PMOP	C-TRONIC 9 PLUS	\$	240.00

Serrated S-blade:

MSC04AMOZ	C-TRONIC 4 VT	\$	148.00
MSC06AMOZ	C-TRONIC 6 VT	\$	158.00
MSC09PMOZ	C-TRONIC 9 PLUS	\$	184.00

Emulsifying S-blade:

MSC04AMOF	C-TRONIC 4 VT	\$	136.00
MSC06AMOF	C-TRONIC 6 VT	\$	148.00
MSC09PMOF	C-TRONIC 9 PLUS	\$	184.00

Dough S-blade:

MSC04AMOI	C-TRONIC 4 VT	\$	142.00
MSC06AMOI	C-TRONIC 6 VT	\$	152.00
MSC09PMOI	C-TRONIC 9 PLUS	\$	184.00

February 14, 2023

**BOWL "BUFFALO" CHOPPERS**

40793058	KATANA 6	\$	6,730.00
40794058	KATANA 12 PTO - built-in #12 PTO (power take-off) for use w/attachments	\$	8,100.00
40795166	KATANA 20 VV - 220V - Variable speed	\$	9,735.00
LF0221A06232523	Smooth edge 3-blade hub, Katana 6	\$	200.00
LF0221A12232523	Smooth edge 3-blade hub, Katana 12 PTO	\$	220.00
LF0221A20232523	Smooth edge 3-blade hub, Katana 20 VV	\$	240.00
LF0221A06131111	Serrated 3-blade hub, Katana 6	\$	200.00
LF0221A12131111	Serrated 3-blade hub, Katana 12 PTO	\$	220.00
LF0221A20131111	Serrated 3-blade hub, Katana 20 VV	\$	240.00
LF0221A06101010	Unsharpened 3-blade hub, Katana 6	\$	200.00
LF0221A12101010	Unsharpened 3-blade hub, Katana 12 PTO	\$	220.00
LF0221A20101010	Unsharpened 3-blade hub, Katana 20 VV	\$	240.00

**HARD CHEESE GRATERS**

20021608WNA	GF DAKOTA - 1 Hp	\$	1,555.00
20150528F	GFX HP 1.5 - 110V	\$	2,930.00
20251528F	GFX HP 2 - 110V	\$	3,965.00
20251556F	GFX HP 2 - 220V	\$	4,380.00
LF2051033	Stainless steel container, GFX HP 1.5	\$	270.00
LF2052033	Stainless steel container, GFX HP 2	\$	270.00
20400006TF	GF HP 4 - 220V, 3Phase	\$	6,655.00

**POTATO PEELERS**

41100008E	PPJ 10 SC - 110V	\$	4,180.00
41102006E	PPJ 20 SC - 220V	\$	4,740.00
40300052	Filtering system PPJ 10 SC	\$	480.00
40300057			
40300054	Filtering system PPJ 20 SC	\$	550.00
40300059			





February 14, 2023



VACUUM PACKAGING

3330221007DX8	W8 30 DX EASY - 12 1/4" Seal Bar - 9 m ³ /h (318 ft ³ /h) Pump	\$	4,315.00
3340241007DX8	W8 40 DX EASY - 16 1/8" Seal Bar -14 m ³ /h (495 ft ³ /h) Pump	\$	5,000.00
3330221003DX8	W8 30 DX - 12 1/4" Seal Bar - 9 m ³ /h (318 ft ³ /h) Pump	\$	4,490.00
3340281003DX8	W8 40 DX - 16 1/8" Seal Bar - 24 m ³ /h (848 ft ³ /h) Pump	\$	5,725.00
3350281003DX8	W8 50 DX - 20 1/16" Seal Bar - 24 m ³ /h (848 ft ³ /h) Pump	\$	6,755.00
3350281063DX8	W8 50 DX S+G - 20 1/16" Seal Bar - 24 m ³ /h (848 ft ³ /h) Pump - w/ Inert Gas Flush	\$	7,080.00
3350282003DX8	W8 50 DX DB - 2x16 1/8" left and right Seal Bars – 24 m ³ /h (848 ft ³ /h) Pump	\$	7,230.00
337029F3503DX7	W8 70 DX TB - Floor model, 3 Seal Bars design: 1x25 1/4" and 2x16 1/8" - 48 m ³ /h (1,695 ft ³ /h) Pump	\$	14,445.00
IW1071240500	Thermal Label Printer not available on EASY Versions, factory installed to be specified on the PO	\$	300.00



S3340281079DX8	W8 40 DX TOP - 16 1/8" Seal Bar - 24 m ³ /h (848 ft ³ /h) Pump WI-FI, printer included, AOR (Automatic Oil Replacement) ready	\$	6,820.00
S3350281079DX8	W8 50 DX TOP - 20 1/16" Seal Bar - 24 m ³ /h (848 ft ³ /h) Pump WI-FI, printer included, AOR (Automatic Oil Replacement) ready	\$	7,910.00
S3350282079DX8	W8 50 DX DB TOP - 2x16 1/8" left and right Seal Bars – 24 m ³ /h (848 ft ³ /h) Pump WI-FI, printer included, AOR (Automatic Oil Replacement) ready	\$	8,370.00
IW2071240600	AOR (Automatic Oil Replacement) Kit TOP versions only	\$	455.00



IW2071230210	12 1/4" Seal Bar with Cut-Off Wire, W8 30 models	\$	160.00
IW2071240210	16 1/8" Seal Bar with Cut-Off Wire, W8 40 models	\$	228.00
IW2071250210	20 1/16" Seal Bar with Cut-Off Wire, W8 50 models	\$	215.00

IW2071240098	External Vacuum Hose to be used with our Reinforced Gastronorm Containers and Lids, see below	\$	65.00
--------------	--	----	-------

Reinforced Gastronorm Containers for Vacuum - use with External Vacuum Hose, please call for availability

5858VAC11100B	1/1 H 100	\$	155.00
5858VAC11150B	1/1 H 150	\$	190.00
5858VAC11200B	1/1 H 200	\$	215.00
5858VAC11000C	1/1 Gastronorm Lid	\$	155.00
5858VAC12100B	1/2 H 100	\$	105.00
5858VAC12150B	1/2 H 150	\$	115.00
5858VAC12000C	1/2 Gastronorm Lid	\$	105.00
5858VAC13100B	1/3 H 100	\$	80.00
5858VAC13150B	1/3 H 150	\$	95.00
5858VAC13000C	1/3 Gastronorm Lid	\$	95.00

wide selection of 3mil, 4mil, 5mil vacuum and sous-vide cooking pouches is available and can be selected from a standard range - please contact us

February 14, 2023



SOUS-VIDE COOKERS			
69100058	SOFTCOOKER XP - 110V	\$	1,395.00
69062000	1/1 GN Stainless Steel Container with lid, Softcooker	\$	510.00
69062500	2/1 GN Stainless Steel Container with lid, Softcooker	\$	760.00



69085608	SOFTCOOKER SR 2/3 GN	\$	1,165.00
69125108	SOFTCOOKER SR 1/1 GN	\$	1,395.00



69430058	SOFTCOOKER WI-FOOD X	\$	1,445.00
69440058	SOFTCOOKER WI-FOOD X NFC	\$	1,580.00



69460000	SWP Softcooker Wireless Probe - Pack of 6	\$	365.00
----------	---	----	--------





February 14, 2023



MEAT GRINDERS, ENTRY

210814D8NA	TC 8 VEGAS - 1/3 Hp	\$	910.00
211215D8NA	TC 12 DENVER - 1 Hp peak	\$	1,250.00
211215XD18NA	TC 12 DENVER PLUS - 1 Hp peak	\$	1,580.00
21222418	TC 22 E - 1 1/4Hp	\$	1,555.00



MEAT GRINDERS, HEAVY-DUTY

21221608NA	TC 22 DAKOTA - 1 1/4 Hp	\$	2,210.00
2122965320018	TC 22 COLORADO - 2 Hp	\$	3,500.00
S035135020015	TC 32 COLORADO - 3 Hp, 220V	\$	5,010.00
LF043350	4-leg set with casters, TC 32 COLORADO	\$	1,015.00



2132205010236T	TC 32 MONTANA - 4 Hp, 220V, 3Phase, Floor Model	\$	9,250.00
2142215010236T	TC 42 MONTANA - 7 Hp, 220V, 3Phase, Floor Model	\$	10,610.00



REFRIGERATED MEAT GRINDER *available on request*****

213277D06F	TC 32 NEVADA ICE H	\$	8,270.00
LF039250	FORMAT M - Manual Patty Maker Attachment, choose mold below:	\$	510.00
LF2039282T	MOLD, 110MM (4 1/3") diameter, 4 to 5 oz	\$	205.00
LF2039284	MOLD, ADJUSTABLE from 3 1/2 oz round, up to 7 oz oval	\$	355.00

Italian-made knives and plates:

LF1530000I	NO.8 S/STEEL KNIFE	\$	31.00
LF1531000I	NO.12 S/STEEL KNIFE	\$	42.00
LF1532000I	NO.22 S/STEEL KNIFE	\$	52.00
LF1533000S	NO.32 S/STEEL KNIFE	\$	62.00
LF1534000S	NO.42 S/STEEL KNIFE	\$	103.00
LF1530045I2	4.5MM_3/16" S/STEEL PLATE, 2N - NO.8	\$	63.00
LF1530060I2	6MM_1/4" S/STEEL PLATE, 2N - NO.8	\$	63.00
LF1531045I2	4.5MM_3/16" S/STEEL PLATE, 2N - NO.12	\$	73.00
LF1531060I2	6MM_1/4" S/STEEL PLATE, 2N - NO.12	\$	73.00
LF1531080I2	8MM_5/16" S/STEEL PLATE, 2N - NO.12	\$	73.00
LF1531010I	10MM_3/8" S/STEEL PLATE - NO.12	\$	73.00
LF1531014I	14MM_9/16" S/STEEL PLATE - NO.12	\$	73.00



February 14, 2023



LF1532045I2	4.5MM_3/16" S/STEEL PLATE, 2N - NO.22	\$	83.00
LF1532060I2	6MM_1/4" S/STEEL PLATE, 2N - NO.22	\$	83.00
LF1532080I2	8MM_5/16" S/STEEL PLATE, 2N - NO.22	\$	83.00
LF1532010I	10MM_3/8" S/STEEL PLATE - NO.22	\$	83.00
LF1532014I	14MM_9/16" S/STEEL PLATE - NO.22	\$	83.00



LF1533030I2S	3MM_1/8" S/STEEL PLATE, 2N - NO.32	\$	135.00
LF1533045I2S	4.5MM_3/16" S/STEEL PLATE, 2N - NO.32	\$	135.00
LF1533060I2S	6MM_1/4" S/STEEL PLATE, 2N - NO.32	\$	135.00
LF1533080I2	8MM_5/16" S/STEEL PLATE, 2N - NO.32	\$	135.00
LF1533010I	10MM_3/8" S/STEEL PLATE - NO.32	\$	135.00
LF1533014I	14MM_9/16" S/STEEL PLATE - NO.32	\$	135.00



LF1534030I2S	3MM_1/8" S/STEEL PLATE, 2N - NO.42	\$	341.00
LF1534045I2	4.5MM_3/16" S/STEEL PLATE - NO.42	\$	248.00
LF1534060I2	6MM_1/4" S/STEEL PLATE, 2N - NO.42	\$	248.00
LF1534080I2	8MM_5/16" S/STEEL PLATE, 2N - NO.42	\$	248.00
LF1534010I	10MM_3/8" S/STEEL PLATE - NO.42	\$	248.00
LF1534012IS	12MM_1/2" S/STEEL PLATE - NO.42	\$	248.00
LF1534016I	16MM_5/8" S/STEEL PLATE - NO.42	\$	248.00

**MEAT MIXERS**

40803616F	IP 50 M - 220V	\$	5,860.00
LF039770	4-leg set with casters, IP 50 M	\$	760.00
40806106F	IP 80 BA XP - 220V	\$	10,565.00
40807106TF	IP 120 BA XP - 220V 3Phase	\$	12,675.00
40808106TF	IP 180 BA XP - 220V 3Phase ***available on request***	\$	14,365.00

**SAUSAGE STUFFERS, MANUAL**

40120800	IS 8 X - Horizontal Design	\$	1,220.00
40121600	IS 16 X - Horizontal Design	\$	1,535.00
40132103	IS 12 VX - Vertical Design	\$	1,810.00

**HYDRAULIC SAUSAGE STUFFERS**

40151506NA	IS 15 IDRA - 220V	\$	5,335.00
40153006NA	IS 25 IDRA - 220V 1Phase	\$	7,225.00
40153506TNA	IS 35 IDRA - 220V 3Phase	\$	10,140.00
LF011204	4-S/STEEL NOZZLE SET_1/2"(13MM) 5/8"(16MM) 7/8"(22MM) 1 3/8"(35MM)	\$	225.00
LF2011015	3-POLYETHYLENE NOZZLE SET_3/8"(10MM) 5/8"(16MM) 1"(25MM)	\$	80.00

February 14, 2023

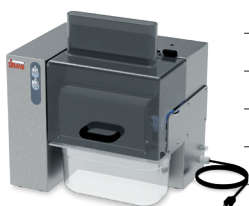


MEAT TENDERIZER, MANUAL

40005000	T-REX	\$	3,075.00
----------	-------	----	----------

STEAK TENDERIZER, MANUAL

40005100	DRAKE MAN - choose cradle type below:	\$	810.00
LF029730	96-blade Tenderizer cradle, Drake Man	\$	1,660.00
LF029750	48-blade 3/8" (10MM) Strip cutter fajita cradle	\$	1,500.00
LF029755	32-blade 5/8" (15MM) Strip cutter fajita cradle	\$	1,270.00



STEAK TENDERIZER

40005258	DRAKE - choose cradle type below:	\$	3,265.00
40005232	96-blade Tenderizer cradle, Drake	\$	1,590.00
40005252	48-blade 3/8" (10MM) Strip cutter fajita cradle	\$	1,495.00
40005257	32-blade 5/8" (15MM) Strip cutter fajita cradle	\$	1,370.00

PATTY PRESSES, MANUAL

40004100	SA 100 - Ø 4"	\$	590.00
40004130	SA 130 - Ø 5"	\$	685.00
40004150	SA 150 - Ø 6"	\$	730.00
40004180	SA 180 - Ø 7"	\$	795.00



40004500	MULTIPATTY - choose interchangeable mold(s) below:	\$	715.00
40004510	Interchangeable mold 100 MM - Ø 4"	\$	145.00
40004513	Interchangeable mold 130 MM - Ø 5"	\$	150.00
40004515	Interchangeable mold 150 MM - Ø 6"	\$	165.00
40004518	Interchangeable mold 180 MM - Ø 7"	\$	175.00

28010605	2.2 Lbs Film Dividers, SA 100 - minimum quantity order of 6 pcs	\$	62.00
28010608	2.2 Lbs Film Dividers, SA 130 - minimum quantity order of 6 pcs	\$	62.00
28010612	2.2 Lbs Film Dividers, SA 150 - minimum quantity order of 6 pcs	\$	62.00
28010618	2.2 Lbs Film Dividers, SA 180 - minimum quantity order of 6 pcs	\$	62.00
28010605CP	1.1 Lbs Heat-resistant parchment paper dividers SA 100 minimum quantity order of 6 pcs	\$	28.00
28010608CP	1.1 Lbs Heat-resistant parchment paper dividers SA 130 minimum quantity order of 6 pcs	\$	28.00
28010612CP	1.1 Lbs Heat-resistant parchment paper dividers SA 150 minimum quantity order of 6 pcs	\$	28.00
28010618CP	1.1 Lbs Heat-resistant parchment paper dividers SA 180 minimum quantity order of 6 pcs	\$	28.00

February 14, 2023

PANINONSTICK® PANINI

34A1301105SI	ELIO R - grooved top / grooved bottom, with timer - 10"x10"	\$	805.00
34A1401105SI	ELIO LL - flat top / flat bottom, with timer - 10"x10"	\$	805.00
34A1601105SI	ELIO L - grooved top / flat bottom, with timer - 10"x10"	\$	805.00
		\$	
34A2301105SI	CORT R - grooved top / grooved bottom, with timer - 10"x15"	\$	1,015.00
34A2401105SI	CORT LL - flat top / flat bottom, with timer - 10"x15"	\$	1,015.00
34A2601105SI	CORT L - grooved top / flat bottom, with timer - 10"x15"	\$	1,015.00
		\$	
34A3331105SI	PD R - grooved top / grooved bottom, with timer - 220V - 10"x20"	\$	1,460.00
34A3441105SI	PD LL - flat top / flat bottom, with timer - 220V - 10"x20"	\$	1,460.00
34A3661105SI	PD L - grooved top / flat bottom, with timer - 220V - 10"x20"	\$	1,460.00
34A3631105SI	PD M - grooved top / half flat and half grooved bottom, with timer - 220V - 10"x20"	\$	1,460.00

PANINONSTICK® PANINI, REMOVABLE PLATES

34A2305105SI	CORT R PS - grooved top / grooved bottom, with timer - 10"x15"	\$	1,220.00
34A3335105SI	PD R PS - grooved top / grooved bottom, with timer - 220V - 10"x20"	\$	1,815.00

BAR RANGE**DRINK MIXERS**

65012048	SIRIO 1	\$	350.00
65012148	SIRIO 1 C - Foaming Spindle	\$	355.00
65010100	Stainless Steel Container, Sirio	\$	36.00

JUICERS

65197008	APOLLO	\$	565.00
65221008	MERCURIO L - with pusher	\$	810.00
IB2260720	Stainless steel Night Lid, Apollo - Mercurio	\$	40.00

BLENDER

65330608P	ORIONE Q TIMER VV	\$	890.00
-----------	-------------------	----	--------

ICE PROCESSORS

60090048	TRITON - Ice Shaver	\$	1,395.00
60150058	NORDKAPP - Ice Crusher	\$	1,150.00



TERMS AND CONDITIONS

TERMS

- All prices are F.O.B. factory. Price shown are list prices and are subject to trade discount and to change without notice. We carefully check pricing and product specification but occasionally errors can occur, therefore we reserve the right to change both without notice.
- Net 30 with approved credit, otherwise C.O.D. The buyer agrees to pay for all purchases according to standard stated terms from the date of the invoice. No terms or conditions of purchase orders different from standard will become part of any transaction unless specifically approved in writing by Sirman USA. No waiver of any terms herein shall constitute a waiver of this agreement. An interest rate of 1 1/2% per month will be charged on past due accounts. Claims or disputes do not relieve the buyer from obligation of prompt payment. All merchandise remains the property of Sirman USA until paid in full. Other payment options include check in advance, wire transfer, Visa, MasterCard and American Express. A 3.5% fee applies for credit card payments.
- Sirman USA is not responsible for any damage or loss incurred while merchandise is in the hands of the carrier. (For any damage and loss incurred in transit, file claim against carrier promptly.)
- Merchandise is shipped on open account to those firms furnishing satisfactory credit references.
- Sirman USA reserves the right to ship via carriers that, in our opinion, are the most efficient. We will follow customer's routing if possible.
- Unless specified, all orders are shipped "Prepaid & Add"

ORDERS

- Written purchase orders will be accepted via fax/e-mail. Phone orders will be confirmed by Sirman USA via fax/e-mail A.S.A.P and require written customer confirmation.
- A \$10.00 service charge is added to all orders less than \$100.00 net.

RETURNS

Overview:

- Authorization for return will only be granted within 30 days of shipment from factory.
- Any returned items received without an approved RA number, not in their original factory packaging, having been used in a manner not specified by Sirman USA and/or unable to be repaired to restock condition will be refused at the Sirman USA warehouse and returned to the customer at their expense.
- Returned items free of damage and defect, in original factory packaging and in a condition to be fully restocked, Sirman USA will issue a credit against the original invoice amount paid, less freight and a minimum restocking charge of 25% within 10 days of item receipt and inspection. If item is not received by Sirman USA within 30 days after RA issuance then RA will be voided.
- Returned items not in a condition to be restocked will be subject to a standard 25% restocking fee, a reconditioning charge (\$95 per hour), plus the cost of any parts and materials needed to bring the item to the accepted restock condition.
- All returned items must be carefully packaged to ensure safe shipment. All return freight, duties, fees and taxes must be prepaid. Please note that the RA number issued must be clearly marked on the outside of the return item package or it will be refused by Sirman USA.
- Credits on returned items will only apply when authorized and issued by Sirman USA. Credits will be issued against original customer transaction in accordance with standard procedure.
- Sirman USA in no way is responsible for issuing credits and/or monies to any third party. Sirman USA sole responsibility is to the account or party who purchased product from us.

Return request:

- To request a return please go to www.sirman.com and under the 'Services' menu, select and fill out the 'RA Request Form'.

LIMITED WARRANTY

Overview:

The warranty applies on all Sirman USA products only when used under normal foodservice industry conditions.

- All Sirman USA equipment carries a one-year, carry-in or on-site parts and labor warranty against any flaws in materials and workmanship when utilized and operated according to the specified operations manual and capacity ratings.
 - All requests for warranty service must be authorized by Sirman USA prior to the repair. Any repairs that are not properly authorized by Sirman USA shall be the monetary responsibility of the customer.
 - Sirman USA reserves the right to replace or repair equipment under warranty. Any replacement of parts or materials not offered or specified by Sirman USA shall void all warranties in their entirety.
 - On-site warranty applies for:
 - Slicers: Flywheel, Heavy-duty and Automatic / Pasta Machines / Spiral Mixers / 12 and 20 Quarts Buffalo Choppers / 4 Hp Cheese Grater / Vacuum Packaging Machines / Meat Grinders - from 3 Hp / Meat Mixers / Hydraulic Sausage Stuffers.
- Any work to be performed under this warranty must be performed between the hours of 8.00 a.m. and 4.00 p.m. local time, Monday through Friday. Sirman USA will not pay overtime charges for work performed other than during normal business hours.

Warranty eligibility:

- To be eligible for warranty, the owner must register online within 30 days of the purchase date. Please go to www.sirman.com and under the 'Services' menu, select and fill out the 'Warranty Registration' form. You'll get faster service when all product information - model and serial number, registration date, location of installation, etc. - is already in our system. Moreover, by having your registration on file, we can log any warranty calls, track service provided under warranty and send out product updates on recalls, new suggested maintenance schedules, even software updates.
- Clean, maintain and service the equipment according to the instructions to ensure there's no violation of the warranty's terms. If the equipment doesn't operate correctly, use the troubleshooting guide first before calling us. Follow the warranty claim instructions to initiate service.

Warranty request:

- To request warranty service, please go to www.sirman.com and under the 'Services' menu, select and fill out the 'Support and Service Request Form'.

Warranty exclusions:

- Products that have been damaged in transit, by accident, carelessness, improper installation - using an unauthorized or unlicensed installer, using the wrong electrical service - lack of proper setup or supervision when required, neglect, improper usage - make sure Managers read and follow instructions in the operating manual and train Employees to use and maintain equipment properly - overloading or operation contrary to installation and operating instructions. Transit damages should be reported to the carrier immediately.
- Consumable parts and normal wear and tear or other causes not arising out of defects in materials or workmanship.
- Scheduled maintenance has not been performed (e.g. oil and filter change on Vacuum Packaging Machines).

Disclaimer:

THE LIMITED WARRANTY SET FORTH ABOVE IS THE SOLE AND ENTIRE WARRANTY PERTAINING, TO THE PRODUCT AND IS IN LIEU OF AND EXCLUDES ALL OTHER WARRANTIES OF ANY NATURE WHATSOEVER, WHETHER EXPRESSED, IMPLIED OR ARISING BY OPERATION OF LAW, INCLUDING, BUT NOT LIMITED TO ANY IMPLIED WARRANTIES OF MERCHANT ABILITY OR FITNESS FOR PARTICULAR PURPOSE. THIS WARRANTY DOES NOT COVER OR PROVIDE FOR THE REIMBURSEMENT OR PAYMENT OF INCIDENTAL OR CONSEQUENTIAL DAMAGES OF ANY TYPE, MANNER, OR DEGREE, AND ANY LIABILITY BY SIRMAN OR SIRMAN USA, INC. FOR SUCH INCIDENTAL OR CONSEQUENTIAL DAMAGES HEREBY DISCLAIMED. Some States do not allow this exclusion or limitation of warranties and/or damages, so the above limitations and/or exclusions might not be applicable to you. This warranty gives you specific legal rights, and you might also have other rights that vary from State to State.



SIRMAN USA, Inc.
9490 Franklin Avenue
Franklin Park, IL 60131
U.S.A.

Toll free: 866-643-6872
Phone: +1 847-288-9500
Fax: +1 844-836-7076

sirmanusa@sirman.com - www.sirman.com



SIRMAN USA, Inc.
9490 Franklin Avenue
Franklin Park, IL 60131
U.S.A.

Toll free: 866-643-6872
Phone: +1 847-288-9500
Fax: +1 844-836-7076

sirmanusa@sirman.com - www.sirman.com